

Михаіли Максимовичи

науч. профессора

Академія Мѣхалова. Дарована
1870



Maestoso.

U Trojck atlamy.
Intrositus.

U Trojck at- ta- my ply po- kor-na gra-ma- la,

Pa- tro-um et Do- mi- ni u- sp- a- la.

wo- ta Gy- ae, i och Sy- nec- uo- ta,

Krocch dach Krocch sply- nie P do te- go Kwi- cis- ta.

Ho-sanna pod mi-ko-ry-żą i-er-u-za-lem. su-bi-ter-cha-ri-ty,

Ho-san-na

Ho-san-na i-er-u-za-lem. su-bi-ter-cha-ri-ty,

Ho-san-na i-er-u-za-lem. su-bi-ter-cha-ri-ty,

O Bożku Boży Panie, spuść swój po-koj nam do-ś-ko-ny,

Panie

O-her-ty-ko-ny i-er-u-za-lem. su-bi-ter-cha-ri-ty,

Panie

Andante

Jesus dulcis memoria

ff

p. Je - su dul - cis me - mo - ri - a dans

ve - ra cor - dis gau - di - a sed su - per

mel et o - - mi - a e - jus dulcis pro - senti - a.

1. *Sil canitur suavius,*
2. *Sil auditur jucundius*
3. *Sil cogitatur, Deo Filius dulciss*
4. *Cum Jesus, Dei Filius.*

1. *Sec lingua valet dicere*
2. *Sec littera esse primere,*
3. *Sec perbus potant credere,*
4. *Quid sit Jesum diligere.*

Maestoso

Sanctus.

pp. *Sanc-tus! sanc-tus! sanc-tus!* *San-ctus!* *San-ctus!*

ste - rum, Pa-tris mi-se-re-re-n-tis!

Allegro
Et ne-sce-mus qui se-det ad dex-te-ras Pa-tris, qui cum Pa-tre et Spi-ri-tu Sancto simul con-si-stit et con-glori-atur, qui cum Pa-tre et Spi-ri-tu Sancto simul procedit et procedit, qui cum Pa-tre et Spi-ri-tu Sancto simul procedit et procedit.

rall.

Andante

Na brzoziach gór, Jęz u-wiel-bieniam, Wzniesie się

nieświeżo od-mę-ży, Na-rodę jedno-rodnem

pieniem I spiewajcie, pp. Jęz u-wiel-bieniam, wie-ńcie II. spiewajcie

Świą-ty, Świą-ty, Świą-ty

Andante. *Christe*

Handwritten musical notation for the first system of 'Christe'. The score is written on a grand staff with a treble clef on the upper staff and a bass clef on the lower staff. The music is in 3/4 time and features a key signature of one flat (B-flat). The lyrics are written below the notes: "Christe eleison - eleison - eleison - eleison".

Handwritten musical notation for the second system of 'Christe'. The score continues on a grand staff with treble and bass clefs. The lyrics are: "Christe eleison - eleison - eleison - eleison".

Handwritten musical notation for the third system of 'Christe'. The score continues on a grand staff with treble and bass clefs. The lyrics are: "Christe eleison - eleison - eleison - eleison".

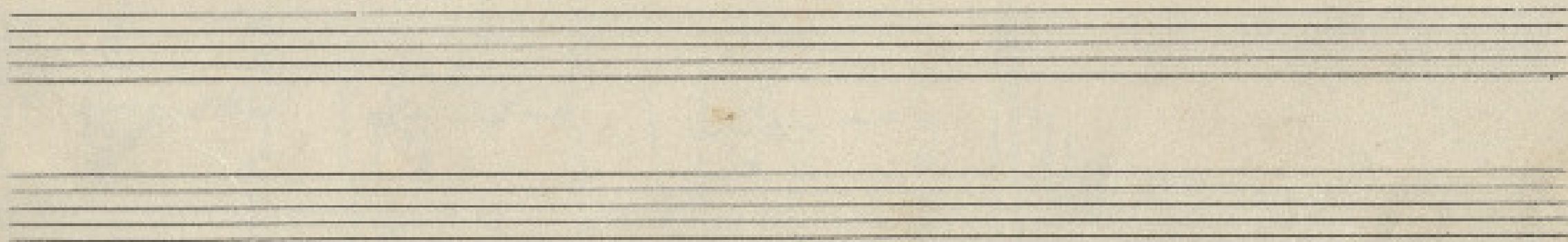
Handwritten musical notation for the fourth system of 'Christe'. The score continues on a grand staff with treble and bass clefs. The lyrics are: "Christe eleison - eleison - eleison - eleison". The system concludes with a double bar line.

Andante maestoso. Gloria
fr

Thy-a Pa-tri-mu-ni-phi-li-um-que-ter-tium-Sub-stan-tiam

con-subs-tantiam-que-ter-tiam-que-om-ni-um-to-ge-nera-rum

con-subs-tantiam-que-ter-tiam-que-om-ni-um-to-ge-nera-rum



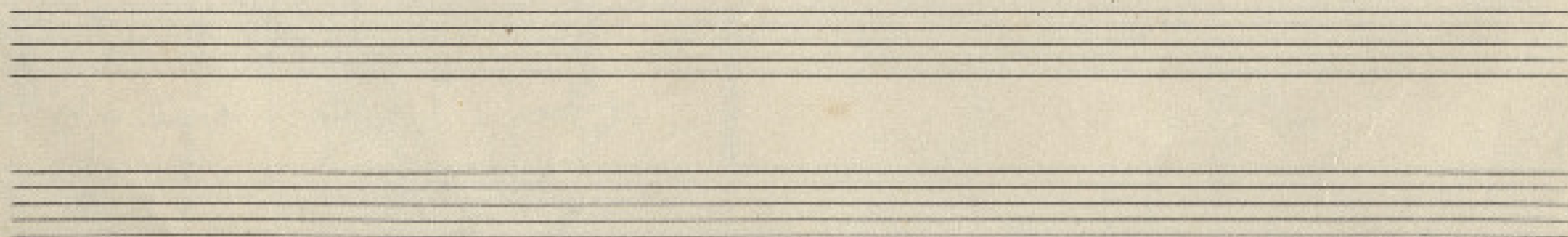
Maestoso Moderato

Credo

Handwritten musical notation for the first system of the Credo. It consists of a treble clef staff and a bass clef staff. The lyrics are: *De-um, qui ex Patre Filiumque*

Handwritten musical notation for the second system of the Credo. It consists of a treble clef staff and a bass clef staff. The lyrics are: *genitum, qui de Deo procedit, qui de Patre Filiumque*

Handwritten musical notation for the third system of the Credo. It consists of a treble clef staff and a bass clef staff. The lyrics are: *de Deo procedit, qui de Patre Filiumque*



Offertorium.

Handwritten musical notation for the first system of an offertorium. It consists of two staves, treble and bass clef. The lyrics are written above the notes. The text is: "Pau-er-lich-keit Bo-er-heit".

Handwritten musical notation for the second system of an offertorium. It consists of two staves, treble and bass clef. The lyrics are written above the notes. The text is: "Ma-nas Ho-er-ten-ge-ru-eh-er-ten-ge-ru-eh-er-ten".

Handwritten musical notation for the third system of an offertorium. It consists of two staves, treble and bass clef. The lyrics are written above the notes. The text is: "wie-der-um-ge-bo-ren-heit".

Handwritten musical notation for the fourth system of an offertorium. It consists of two staves, treble and bass clef. The lyrics are written above the notes. The text is: "er-ge-ber- dich". The system ends with a double bar line and a scribbled-out section.

Maestoso

Sanctus.

U pa-daj na ko-la-na lu-du

an-ia pre-je- U-wiel-bioj Two-go Pa

ma-ri Swi-ty, swi-ty, swi-ty, swi-ty

swi-ty

Andante.

Agnus Dei.

Dus. ci-mi go-dae salu-melior a-lio. 2. Ave-go

sto-ty da-ny tis. de. ho-re do. O-jes-pet-ne sig-ya.

San-cti us me-dia ti-ty-ro. ho-sti-ik us

me-dia ti-ty-ro

f Tempo Poloneza

Chór męski

Stanisław M. Lisowski

Handwritten musical notation for the first system, featuring a grand staff with treble and bass clefs and a 3/4 time signature. The melody is written in the treble clef, and the accompaniment is in the bass clef.

W ser- ca twoj sę re- cęć to- my, Do wień lodzickość
 Nad dus ser- ce zpać się.

Handwritten musical notation for the second system, continuing the melody and accompaniment.

doga; to - pal bo nie - wygieria my Tu - bi chwila

Handwritten musical notation for the third system, including some bracketed passages.

ta Wic sto- woj- my wie sta- woj- my wie- nie

Handwritten musical notation for the fourth system, concluding the piece.

zoo. nam wstawy dzisiaj nad; Nad zachowy wspania to - nam

Handwritten musical notation on a grand staff. The first system consists of two staves with a brace on the left. The second system also consists of two staves, with the word "Konic" written above the notes. The notes are mostly quarter and eighth notes.

kon nasz w swie przed.

klubny sieby plow.

na jedne glas

klubny sieby plow. ~~kon~~

Klub nasz somo wplyw spinnu u naszi stop swi, Tamto co tak zlosny
 nieszom naszi obywatel je O. miach sieje O. miach jak naszillow
 so wozpiew swowca on. O. miach z biera pelny duzy klubny sieby plow.